

Application-layer Protocols

Kai Shen

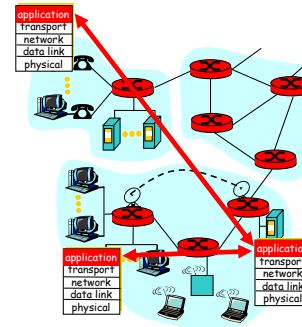
Dept. of Computer Science, University of Rochester

10/29/2007

CSC 257/457 - Fall 2007

1

Network Applications and Application-layer Protocols



Network applications:

- running in end systems (hosts)
- distributed, communicating using network
- use communication services provided by lower layer protocols (TCP, UDP)
- e.g., e-mail, Web, FTP, instant messaging

Application-layer protocols

- define interface between application entities

10/29/2007

CSC 257/457 - Fall 2007

2

Protocols vs. Implementations

- They specify:
 - Syntax and semantics of messages exchanged
 - Rules for when and how processes send & respond to messages
- They **don't** specify the implementation:
 - Programming, data structure, ...
- The goal:
 - Components implemented independently can inter-operate with each other as long as they follow the protocol specification

10/29/2007

CSC 257/457 - Fall 2007

3

Network Applications

- Some commonplace applications
 - Web and HTTP
 - FTP, telnet, SSH
 - Electronic mail: SMTP, POP3, IMAP
 - DNS
 - Distributed file sharing
 - Multicast on overlay networks
 -

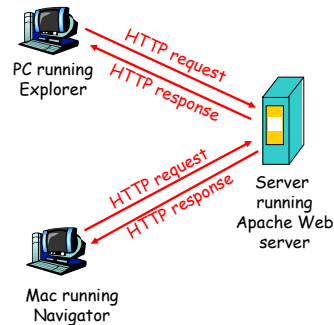
10/29/2007

CSC 257/457 - Fall 2007

4

HTTP and Web

- **HTTP:** hypertext transfer protocol
- **Web:** the application using HTTP protocol
- **Client/server model**
 - **client:** browser that requests, receives, "displays" Web objects
 - **server:** Web server sends objects in response to requests



10/29/2007

CSC 257/457 - Fall 2007

5

Performance of HTTP Persistency

Non-persistent HTTP (1.0)

- At most one object is sent over a TCP connection.

Persistent HTTP (1.1)

- Multiple objects can be sent over single TCP connection between the browser and web server.

TCP performance overhead:

- connection establishment
- congestion control: slow start

Non-persistent HTTP issues:

- pay these overhead for each object
- but browsers can open parallel TCP connections to fetch objects

10/29/2007

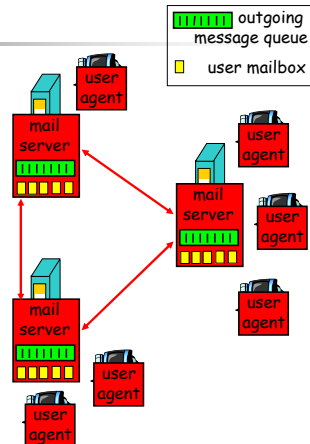
CSC 257/457 - Fall 2007

6

Electronic Mail

Two types of entities:

- **Mail servers**
 - mailbox contains incoming messages for users
 - message queue of outgoing (to be sent) mail messages
- **User agents**
 - a.k.a. "mail reader"
 - composing, editing, reading mail messages
 - e.g., pine, Outlook, Netscape Messenger



10/29/2007

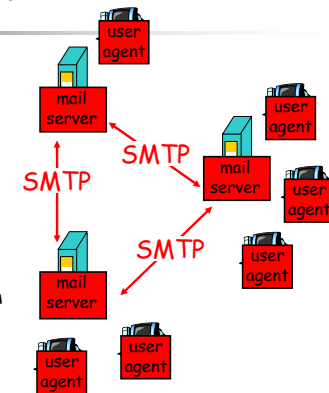
CSC 257/457 - Fall 2007

7

Electronic Mail

Two types of protocols:

- **mail transfer protocol**
 - from sender agent to the receiver's mail server
 - SMTP (simple mail transfer protocol)
- **mail access protocol**
 - the receiver pulls mails from server to agent
 - POP3, IMAP, HTTP



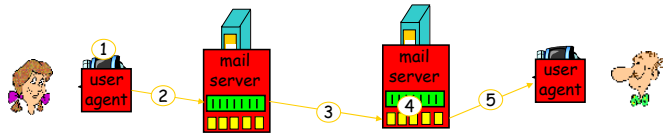
10/29/2007

CSC 257/457 - Fall 2007

8

Alice sends message to Bob

- 1) Alice uses UA to compose message with Bob's address
- 2) Alice's UA sends message to her mail server through SMTP; message placed in message queue
- 3) Alice's mail server sends message to Bob's mail server through SMTP
- 4) Bob's mail server places the message in Bob's mailbox
- 5) Bob invokes his user agent to read message



10/29/2007

CSC 257/457 - Fall 2007

9

SMTP Interaction between mail servers at cs.rochester.edu (client) and hotmail.com (server)

```
S: 220 hotmail.com
C: HELO cs.rochester.edu
S: 250 Hello cs.rochester.edu, pleased to meet you
C: MAIL FROM: <alice@cs.rochester.edu>
S: 250 alice@cs.rochester.edu... Sender ok
C: RCPT TO: <bob@hotmail.com>
S: 250 bob@hotmail.com ... Recipient ok
C: DATA
S: 354 Enter mail, end with "." on a line by itself
C: Do you like ketchup?
C:   How about pickles?
C: .
S: 250 Message accepted for delivery
C: QUIT
S: 221 hotmail.com closing connection
```

10/29/2007

CSC 257/457 - Fall 2007

10

Try SMTP interaction for yourself

- `telnet servername 25`
- see 220 reply from server
- enter HELO, MAIL FROM, RCPT TO, DATA, QUIT commands

This lets you

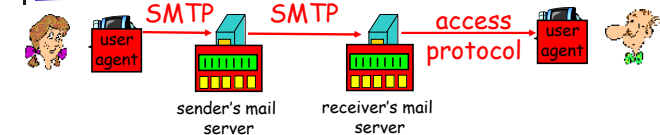
- send email without using a normal email client
- ...

10/29/2007

CSC 257/457 - Fall 2007

11

Mail Access Protocols



- SMTP: delivery/storage to receiver's server
- Mail access protocol: retrieval from server
 - POP: Post Office Protocol
 - authorization and download
 - IMAP: Internet Mail Access Protocol
 - more features (more complex)
 - manipulation of stored msgs on server
 - HTTP: Hotmail, Yahoo! Mail, etc.

10/29/2007

CSC 257/457 - Fall 2007

12

DNS: Domain Name System

People: multiple identifiers

- SSN - used for tax reporting, good for bookkeeping, indexing
- name - human friendly, easy to remember

Internet hosts:

- IP address - used for addressing, routing on the Internet
- "name", e.g., tallinn.cs.rochester.edu - human friendly

Q: map between IP addresses and name?

- **DNS query**: find the IP address for a given name
- not part of Internet as a network
- core function for Internet applications
 - "telnet tallinn.cs.rochester.edu" vs. "telnet 128.151.67.155"
 - <http://www.cnn.com> vs. <http://64.236.24.20>

10/29/2007

CSC 257/457 - Fall 2007

13

Domain Name System: Overview

- distributed database
 - implemented with collaboration of many name servers distributed all over the network
- DNS queries
 - **name lookup**: find the IP address for a given name
 - others: find mail server for a domain, ...

10/29/2007

CSC 257/457 - Fall 2007

14

DNS: Decentralized and Hierarchical

- Decentralized
 - no server has all name-to-IP address mappings
- Why not centralize DNS?
 - single point of failure, performance bottleneck
 - can only be close to few hosts ⇒ long latency to many others
- What if massively replicating it?
 - **no full replication**: too much data to fit into any single server
 - **no perfect consistency**: hard to make any changes on the data
- Hierarchical
 - there are different types of name servers

10/29/2007

CSC 257/457 - Fall 2007

15

Types of Name Servers

- **local name server** (defined for a particular group of hosts):
 - each organization often has local (default) name server
 - used when one of the hosts in its domain initiates a DNS query
 - first stop for a DNS query
- **authoritative name server** (defined for a particular group of hosts):
 - maintain "IP address - name" mapping for a group of hosts so it can answer DNS query for these hosts
 - used when one of the hosts in its domain is the target of a DNS query
 - last stop for a DNS query (if ever reached)
 - often the same as local name server for an organization
- each local NS may not know all authoritative NSs
 - something is missing ...

10/29/2007

CSC 257/457 - Fall 2007

16

Root Name Servers

- **root name server** (defined globally)
 - bridging between local NSs and authoritative NSs
 - contacted by local name server that can not resolve name
- what it does:
 - contacts authoritative name server
 - gets result and returns it to the requesting local name server



10/29/2007

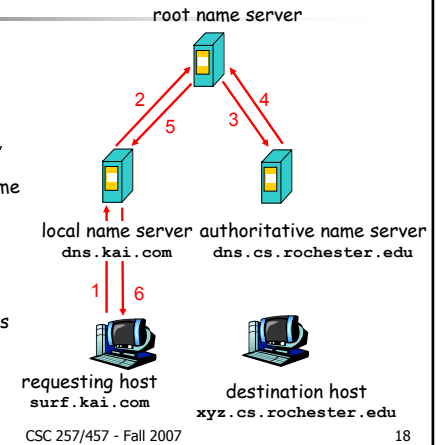
17

DNS Query in Action

host **surf.kai.com** wants IP address of **xyz.cs.rochester.edu**

1. contacts its local DNS server, **dns.kai.com**
2. **dns.kai.com** contacts root name server
3. root name server contacts authoritative name server, **dns.cs.rochester.edu**

Note that the destination host is not involved in the lookup.



10/29/2007

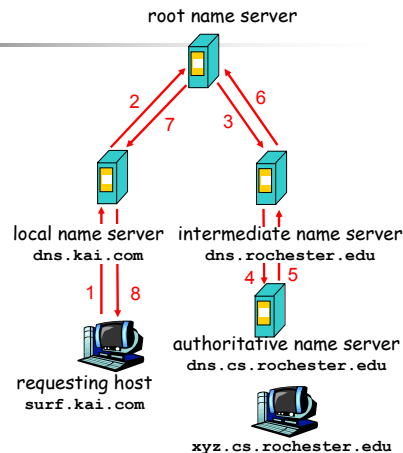
CSC 257/457 - Fall 2007

18

Intermediate Name Servers

Root name server:

- may not know authoritative name server
- may know **intermediate name server**: who to contact to find authoritative name server



10/29/2007

CSC 257/457 - Fall 2007

19

Iterative Queries

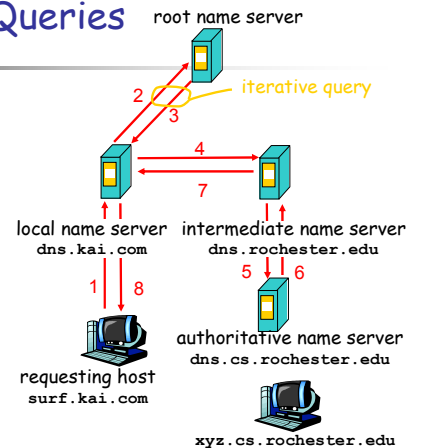
recursive query:

- puts burden of name resolution on contacted name server

iterative query:

- contacted server replies with name of server for next contact
- "I don't know this name, but ask this server"

What is the real difference here?



10/29/2007

CSC 257/457 - Fall 2007

20

DNS Caching

- once (any) name server learns mapping, it caches mapping
 - next query for the same name can be answered directly
 - can be at any step of the name lookup (even an end host)
- cache entries timeout (and removed) after some time (e.g., a few minutes to a few days)
 - timeout is necessary because the mapping can change
 - switch Web server to a more powerful machine → change the mapping between www.cs.rochester.edu to IP address of the new machine
 - load balancing

10/29/2007

CSC 257/457 - Fall 2007

21

DNS Scalability & Reliability

- Scalability
 - poor scalability at the few root name servers
 - made more scalable by caching
- Reliability
 - problems at (even a single) root name server(s) can cause big problem
 - again, caching helps improve reliability
- DNS caching is partial, not perfectly consistent replication
 - only feasible for stable name-IP address mapping; may not be suitable for more dynamic

10/29/2007

CSC 257/457 - Fall 2007

22

TCP vs. UDP

- We saw applications:
 - Web/HTTP
 - Email/SMT/POP/IMAP
 - DNS
- They build on some transport services.
 - TCP or UDP?

10/29/2007

CSC 257/457 - Fall 2007

23

Disclaimer

- Parts of the lecture slides contain original work of James Kurose, Larry Peterson, and Keith Ross. The slides are intended for the sole purpose of instruction of computer networks at the University of Rochester. All copyrighted materials belong to their original owner(s).

10/29/2007

CSC 257/457 - Fall 2007

24